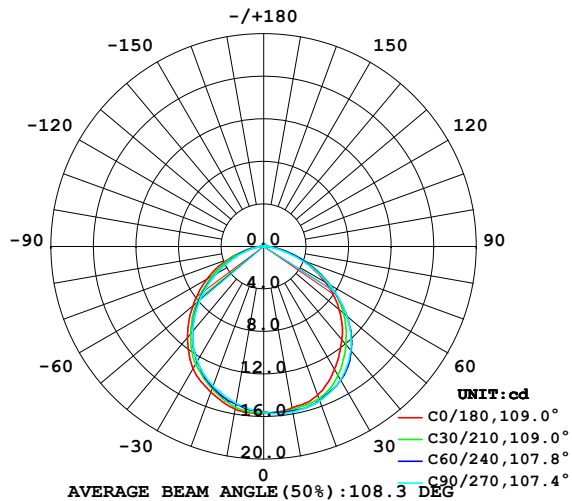


LUMINAIRE PHOTOMETRIC TEST REPORT

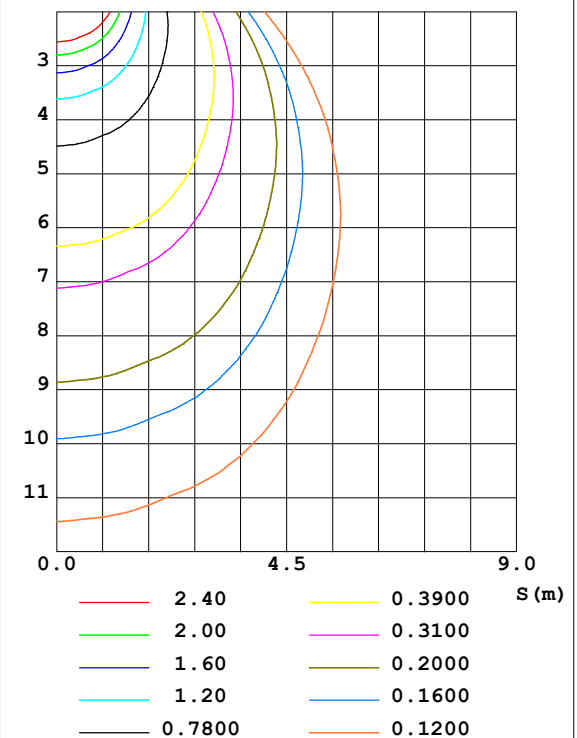
Test:U:24.00V I:0.1677A P:4.025W PF:1.000 Lamp Flux:43.5636x1 lm		
NAME: SP01-24V-5050-60-RGBW-5000K-80-B	TYPE: 硅胶	WEIGHT:
DIM.: 15mm*7mm	SPEC.:	SERIAL No.:20221223
MFR.: OLYMPIA	SUR.:1*0.0015	PROTECTION ANGLE:

DATA OF LAMP		PHOTOMETRIC DATA Eff: 10.82 lm/W			
MODEL	5050	I _{max} (cd)	15.80	S/MH (C0/180)	1.26
NOMINAL POWER (W)	17	LOR (%)	100.0	S/MH (C90/270)	1.36
RATED VOLTAGE (V)	24	TOTAL FLUX (lm)	43.564	η UP, DN (C0-180)	0.9, 52.7
NOMINAL FLUX (lm)	43.5636	CIE CLASS	DIRECT	η UP, DN (C180-360)	0.6, 45.7
LAMPS INSIDE	1	η up (%)	1.6	CIBSE SHR NOM	1.25
TEST VOLTAGE (V)	24.0	η down (%)	98.4	CIBSE SHR MAX	1.35

LUMINOUS INTENSITY DISTRIBUTION DIAGRAM



C0 PLANE ISOLUX DIAGRAM (UNIT:lx)



C Range: 0 - 360DEG
C Interval: 30.0DEG
Test Speed: HIGH
Temperature: 25.3DEG
Operators: WFW
Test Date: 2022-12-15

γ Range: 0 - 180DEG
γ Interval: 1.0DEG
Test System: EVERFINE GO-2000B_V1 SYSTEM V2.0.269
Humidity: 65.0%
Test Distance: 10.800m [K=1.0000]
Remarks:

ZONAL FLUX DIAGRAM
AND LUMINANCE LIMITATION CURVES

ZONAL FLUX DIAGRAM:

γ	C0	C45	C90	C135	C180	C225	C270	C315	γ	Φ zone	Φ total	%lum, lamp
10	15.41	15.64	15.79	15.72	15.54	15.22	14.97	14.98	0- 10	1.481	1.481	3.4,3.4
20	14.87	15.31	15.45	15.23	14.57	14.16	13.94	14.11	10- 20	4.269	5.749	13.2,13.2
30	13.32	14.24	14.45	14.10	13.27	12.66	12.47	12.72	20- 30	6.510	12.26	28.1,28.1
40	11.44	12.41	12.73	12.23	11.17	10.56	10.43	10.75	30- 40	7.826	20.09	46.1,46.1
50	9.284	10.02	10.19	9.769	8.675	8.082	7.863	8.401	40- 50	7.949	28.04	64.4,64.4
60	6.665	7.137	7.068	6.836	6.161	5.439	5.224	5.800	50- 60	6.865	34.90	80.1,80.1
70	3.957	4.124	3.696	3.951	3.543	3.057	2.696	3.289	60- 70	4.853	39.75	91.3,91.3
80	1.533	1.524	1.155	1.496	1.321	1.160	0.9153	1.219	70- 80	2.503	42.26	97,97
90	0.1390	0.1040	0.0970	0.1007	0.0346	0.0590	0.0556	0.0521	80- 90	0.6122	42.87	98.4,98.4
100	0.0970	0.0970	0.1110	0.0935	0.0348	0.0312	0.0485	0.0416	90-100	0.0711	42.94	98.6,98.6
110	0.0970	0.1143	0.1454	0.1004	0.0693	0.0485	0.0693	0.0554	100-110	0.0820	43.02	98.8,98.8
120	0.0970	0.1281	0.1593	0.1108	0.0970	0.0970	0.0693	0.0865	110-120	0.0952	43.12	99,99
130	0.0970	0.1351	0.1733	0.1247	0.1178	0.1074	0.0693	0.0970	120-130	0.0985	43.22	99.2,99.2
140	0.1314	0.1661	0.1870	0.1454	0.1593	0.1247	0.0831	0.1177	130-140	0.0969	43.31	99.4,99.4
150	0.1801	0.1870	0.2008	0.1801	0.1938	0.1558	0.1247	0.1454	140-150	0.0977	43.41	99.6,99.6
160	0.1870	0.1939	0.2008	0.1835	0.1870	0.1870	0.1869	0.1800	150-160	0.0825	43.49	99.8,99.8
170	0.1870	0.1939	0.1939	0.1835	0.1870	0.1870	0.1870	0.1766	160-170	0.0530	43.55	100,100
180	0.2008	0.1974	0.1939	0.1870	0.1870	0.1905	0.1870	0.1939	170-180	0.0178	43.56	100,100
DEG	LUMINOUS INTENSITY:cd									UNIT:lm		



LUMINANCE cd/(m2)		
G (DEG)	C0/180	C90/270
85	69	48
80	88	67
75	103	87
70	116	108
65	125	127
60	133	141
55	140	151
50	144	159
45	148	164

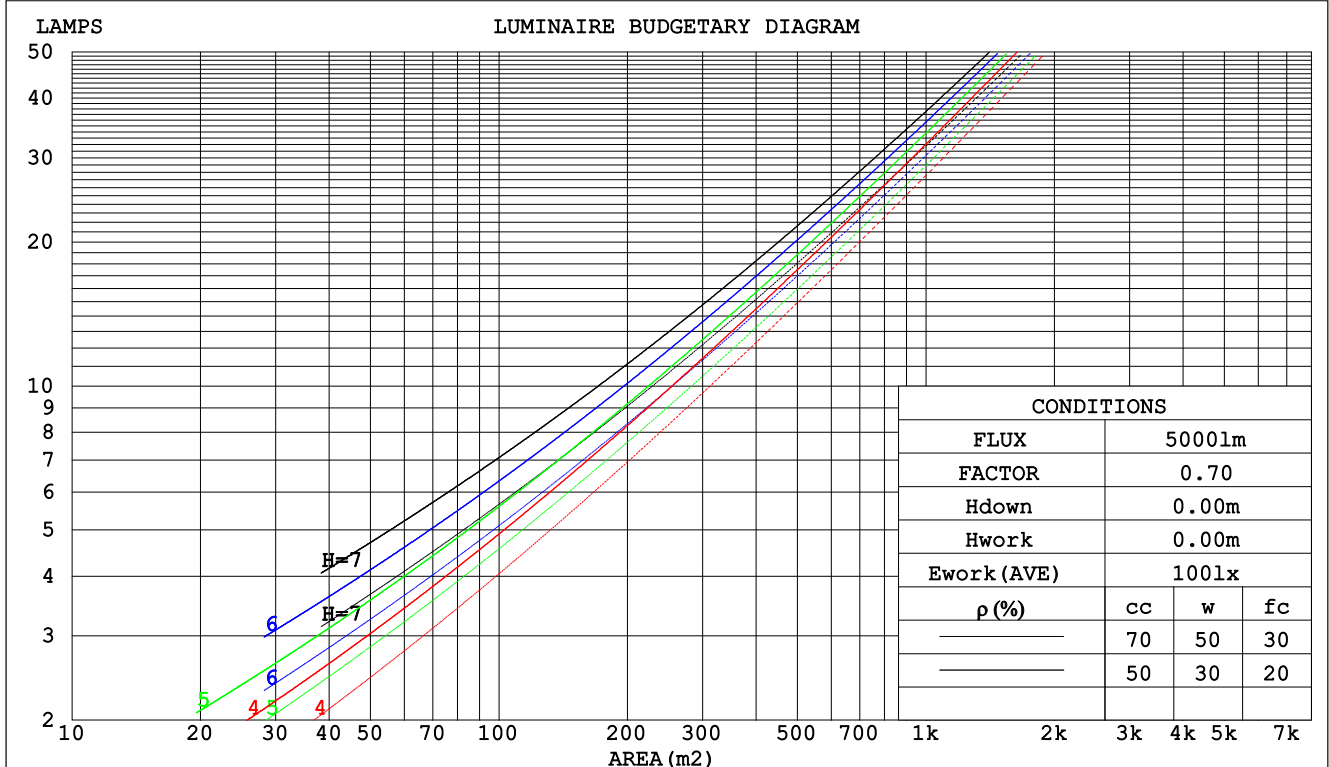
C Range: 0 - 360DEG
C Interval: 30.0DEG
Test Speed: HIGH
Temperature:25.3DEG
Operators:WFW
Test Date:2022-12-15

γ Range: 0 - 180DEG
 γ Interval: 1.0DEG
Test System:EVERFINE GO-2000B_V1 SYSTEM V2.0.269
Humidity:65.0%
Test Distance:10.800m [K=1.0000]
Remarks:

CU AND LUMINAIRE BUDGETARY ESTIMATE DIAGRAM

Test:U:24.00V I:0.1677A P:4.025W PF:1.000 Lamp Flux:43.5636x1 lm		
NAME: SP01-24V-5050-60-RGBW-5000K-80-B	TYPE: 硅胶	WEIGHT:
DIM.: 15mm*7mm	SPEC.:	SERIAL No.:20221223
MFR.: OLYMPIA	SUR.:1*0.0015	PROTECTION ANGLE:

ρ_{cc}	80%			70%			50%			30%			10%			0
ρ_w	50%	30%	10%	50%	30%	10%	50%	30%	10%	50%	30%	10%	50%	30%	10%	0
ρ_{fc}	20%			20%			20%			20%			20%			0
RCR	RCR:Room Cavity Ratio			Coefficients of Utilization(CU)												
0.0	1.19	1.19	1.19	1.16	1.16	1.16	1.10	1.10	1.10	1.05	1.05	1.05	1.01	1.01	1.01	.98
1.0	1.04	1.00	.96	1.02	.98	.95	.97	.94	.91	.93	.91	.88	.89	.87	.85	.83
2.0	.91	.85	.79	.89	.83	.78	.85	.80	.76	.82	.78	.74	.79	.75	.72	.70
3.0	.80	.72	.66	.79	.71	.65	.75	.69	.64	.72	.67	.63	.70	.65	.61	.59
4.0	.71	.63	.56	.70	.62	.56	.67	.60	.55	.65	.59	.54	.62	.57	.53	.51
5.0	.64	.55	.48	.63	.54	.48	.60	.53	.47	.58	.52	.47	.56	.51	.46	.44
6.0	.57	.49	.42	.56	.48	.42	.54	.47	.42	.53	.46	.41	.51	.45	.41	.38
7.0	.52	.43	.37	.51	.43	.37	.50	.42	.37	.48	.41	.36	.46	.41	.36	.34
8.0	.48	.39	.33	.47	.39	.33	.45	.38	.33	.44	.37	.33	.43	.37	.32	.30
9.0	.44	.36	.30	.43	.35	.30	.42	.35	.30	.41	.34	.29	.39	.34	.29	.27
10.0	.40	.32	.27	.40	.32	.27	.39	.32	.27	.38	.31	.27	.37	.31	.27	.25



C Range: 0 - 360DEG
C Interval: 30.0DEG
Test Speed: HIGH
Temperature:25.3DEG
Operators:WFW
Test Date:2022-12-15

γ Range: 0 - 180DEG
 γ Interval: 1.0DEG
Test System:EVERFINE GO-2000B_V1 SYSTEM V2.0.269
Humidity:65.0%
Test Distance:10.800m [K=1.0000]
Remarks:

WEC AND CCEC

Test:U:24.00V I:0.1677A P:4.025W PF:1.000 Lamp Flux:43.5636x1 lm					
NAME: SP01-24V-5050-60-RGBW-5000K-80-B			TYPE: 硅胶		WEIGHT:
DIM.: 15mm*7mm			SPEC.:		SERIAL No.:20221223
MFR.: OLYMPIA			SUR.:1*0.0015		PROTECTION ANGLE:

pcc	80%			70%			50%			30%			10%			0	
pw	50%	30%	10%	50%	30%	10%	50%	30%	10%	50%	30%	10%	50%	30%	10%	0	
pfc	20%			20%			20%			20%			20%			0	
RCR	RCR:Room Cavity Ratio						Wall Exitance Coefficients(WEC)										
0.0																	
1.0	.296	.168	.053	.288	.164	.052	.274	.157	.050	.261	.151	.048	.249	.144	.047		
2.0	.281	.154	.047	.274	.151	.047	.262	.145	.045	.250	.140	.044	.240	.135	.043		
3.0	.261	.139	.042	.256	.137	.041	.245	.133	.040	.234	.128	.039	.225	.124	.039		
4.0	.242	.126	.037	.237	.124	.037	.227	.121	.036	.218	.117	.035	.210	.114	.035		
5.0	.225	.115	.033	.220	.113	.033	.212	.110	.032	.203	.107	.032	.196	.105	.031		
6.0	.209	.105	.030	.205	.104	.030	.197	.101	.029	.190	.099	.029	.183	.096	.029		
7.0	.195	.097	.027	.192	.095	.027	.185	.093	.027	.178	.091	.027	.172	.089	.026		
8.0	.183	.089	.025	.179	.088	.025	.173	.086	.025	.167	.085	.024	.162	.083	.024		
9.0	.171	.083	.023	.168	.082	.023	.163	.080	.023	.157	.079	.023	.152	.077	.022		
10.0	.161	.077	.021	.159	.077	.021	.154	.075	.021	.149	.074	.021	.144	.072	.021		

pcc	80%			70%			50%			30%			10%			0
pw	50%	30%	10%	50%	30%	10%	50%	30%	10%	50%	30%	10%	50%	30%	10%	0
pfc	20%			20%			20%			20%			20%			0
RCR	RCR:Room Cavity Ratio						Ceiling Cavity Exitance Coefficients(CCEC)									
0.0	.203	.203	.203	.173	.173	.173	.118	.118	.118	.068	.068	.068	.022	.022	.022	
1.0	.192	.169	.148	.164	.145	.127	.112	.099	.088	.065	.058	.051	.021	.019	.017	
2.0	.183	.144	.112	.157	.124	.097	.107	.086	.067	.062	.050	.039	.020	.016	.013	
3.0	.175	.127	.088	.150	.109	.076	.103	.076	.053	.060	.044	.032	.019	.014	.010	
4.0	.168	.113	.072	.144	.098	.062	.099	.068	.044	.057	.040	.026	.018	.013	.009	
5.0	.160	.103	.060	.138	.089	.053	.095	.062	.037	.055	.037	.022	.018	.012	.007	
6.0	.153	.094	.052	.132	.082	.046	.091	.057	.032	.053	.034	.019	.017	.011	.006	
7.0	.147	.088	.046	.126	.076	.040	.087	.053	.029	.051	.031	.017	.016	.010	.006	
8.0	.140	.082	.042	.121	.071	.036	.084	.050	.026	.049	.029	.015	.016	.010	.005	
9.0	.134	.077	.038	.116	.067	.033	.080	.047	.024	.047	.028	.014	.015	.009	.005	
10.0	.129	.073	.035	.111	.063	.031	.077	.044	.022	.045	.026	.013	.015	.009	.004	

C Range: 0 - 360DEG
 C Interval: 30.0DEG
 Test Speed: HIGH
 Temperature:25.3DEG
 Operators:WFW
 Test Date:2022-12-15

γ Range: 0 - 180DEG
 γ Interval: 1.0DEG
 Test System:EVERFINE GO-2000B_V1 SYSTEM V2.0.269
 Humidity:65.0%
 Test Distance:10.800m [K=1.0000]
 Remarks:

Uncorrected UGR Table

Test:U:24.00V I:0.1677A P:4.025W PF:1.000 Lamp Flux:43.5636x1 lm										
NAME: SP01-24V-5050-60-RGBW-5000K-80-B					TYPE: 硅胶			WEIGHT:		
DIM.: 15mm*7mm					SPEC.:			SERIAL No.:20221223		
MFR.: OLYMPIA					SUR.:1*0.0015			PROTECTION ANGLE:		
ceiling/cavity	0.7	0.7	0.5	0.5	0.3	0.7	0.7	0.5	0.5	0.3
walls	0.5	0.3	0.5	0.3	0.3	0.5	0.3	0.5	0.3	0.3
working plane	0.2	0.2	0.2	0.2	0.2	0.2	0.2	0.2	0.2	0.2
Room dimensions	Viewed crosswise					Viewed endwise				
x = 2H y = 2H	6.3	7.8	6.6	8.0	8.2	6.5	8.0	6.8	8.2	8.5
3H	7.6	9.0	8.0	9.3	9.5	7.7	9.1	8.0	9.3	9.6
4H	8.1	9.4	8.5	9.7	10.0	8.1	9.3	8.4	9.6	9.9
6H	8.5	9.7	8.8	10.0	10.3	8.3	9.5	8.6	9.8	10.1
8H	8.5	9.7	8.9	10.0	10.3	8.3	9.4	8.6	9.8	10.1
12H	8.6	9.7	9.0	10.0	10.4	8.3	9.4	8.7	9.7	10.1
4H 2H	6.9	8.2	7.2	8.5	8.8	7.1	8.3	7.4	8.6	8.9
3H	8.4	9.5	8.8	9.9	10.2	8.4	9.5	8.8	9.9	10.2
4H	9.0	10.1	9.4	10.4	10.8	8.9	9.9	9.3	10.3	10.6
6H	9.5	10.4	9.9	10.7	11.1	9.2	10.1	9.6	10.5	10.9
8H	9.6	10.4	10.0	10.8	11.2	9.3	10.1	9.7	10.5	10.9
12H	9.7	10.4	10.1	10.8	11.3	9.3	10.1	9.8	10.5	10.9
8H 4H	9.2	10.1	9.7	10.5	10.9	9.1	10.0	9.6	10.4	10.8
6H	9.8	10.5	10.3	10.9	11.4	9.6	10.3	10.0	10.7	11.1
8H	10.0	10.6	10.5	11.1	11.5	9.7	10.3	10.2	10.8	11.2
12H	10.1	10.6	10.6	11.1	11.6	9.8	10.3	10.3	10.8	11.3
12H 4H	9.2	10.0	9.7	10.4	10.9	9.1	9.9	9.6	10.3	10.8
6H	9.8	10.4	10.3	10.9	11.4	9.6	10.2	10.1	10.7	11.1
8H	10.0	10.6	10.5	11.0	11.6	9.8	10.3	10.3	10.8	11.3
Variations with the observer position at spacings:										
S = 1.0H	+ 0.2 / - 0.2					+ 0.2 / - 0.2				
1.5H	+ 0.2 / - 0.4					+ 0.2 / - 0.4				
2.0H	+ 0.2 / - 0.4					+ 0.3 / - 0.3				

CIE Pub.117 Corrected 43.56 lm Total Lamp Luminous Flux. (8log(F/F0) = -10.9)

C Range: 0 - 360DEG
C Interval: 30.0DEG
Test Speed: HIGH
Temperature:25.3DEG
Operators:WFW
Test Date:2022-12-15

γ Range: 0 - 180DEG
γ Interval: 1.0DEG
Test System:EVERFINE GO-2000B_V1 SYSTEM V2.0.269
Humidity:65.0%
Test Distance:10.800m [K=1.0000]
Remarks:

UTILIZATION FACTORS TABLE

Test:U:24.00V I:0.1677A P:4.025W PF:1.000 Lamp Flux:43.5636x1 lm		
NAME: SP01-24V-5050-60-RGBW-5000K-80-B	TYPE: 硅胶	WEIGHT:
DIM.: 15mm*7mm	SPEC.:	SERIAL No.:20221223
MFR.: OLYMPIA	SUR.:1*0.0015	PROTECTION ANGLE:

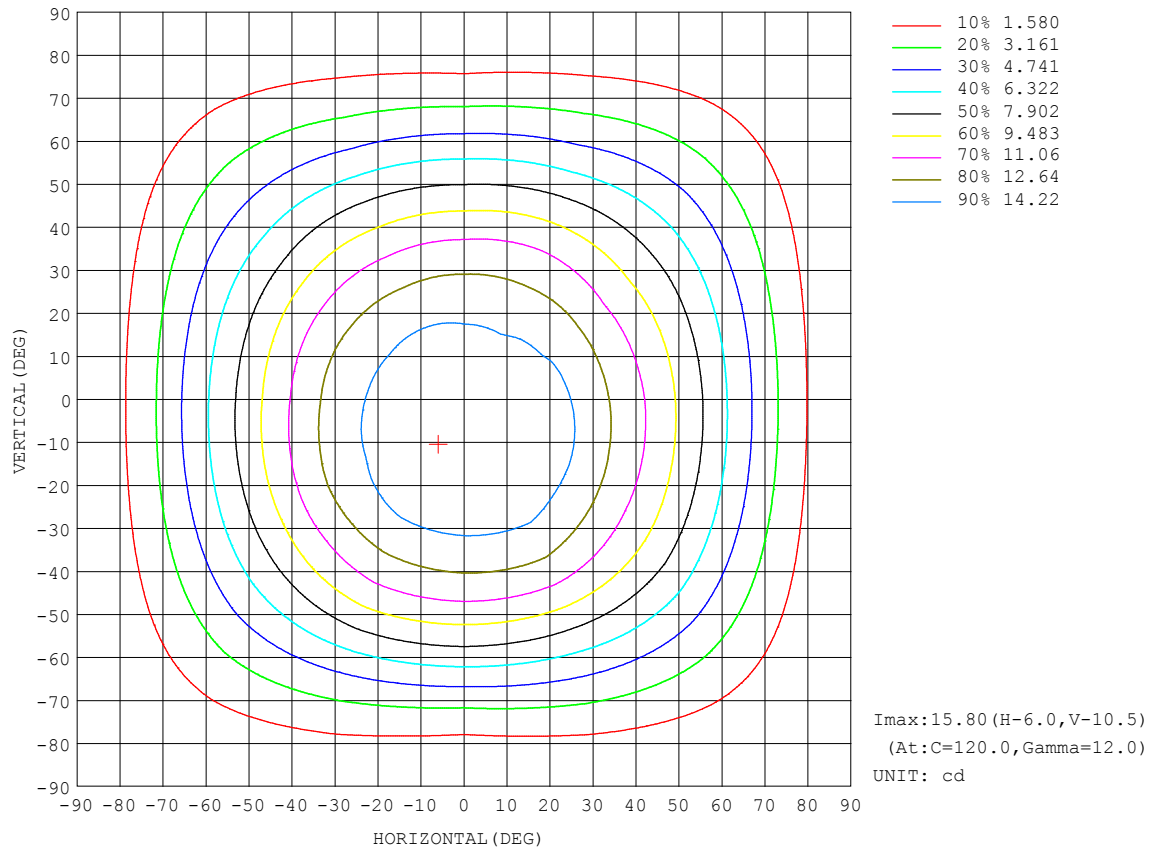
REFLECTANCE										
Ceiling	0.8	0.8	0.8	0.7	0.7	0.7	0.5	0.5	0.5	0
Walls	0.7	0.5	0.3	0.7	0.5	0.3	0.7	0.5	0.3	0
Working plane	0.2	0.2	0.2	0.2	0.2	0.2	0.2	0.2	0.2	0
ROOM INDEX	UTILIZATION FACTORS (PERCENT) $k(RI) \times RCR = 5$									
$k = 0.60$	58	47	40	57	47	40	56	46	40	33
0.80	68	57	50	67	56	50	65	56	49	42
1.00	77	66	59	76	65	59	73	67	58	51
1.25	84	74	67	82	73	66	80	71	65	58
1.50	89	79	72	87	78	72	84	76	71	63
2.00	96	87	81	94	86	80	90	84	79	71
2.50	99	92	86	97	90	85	93	87	83	74
3.00	103	96	91	100	94	89	96	91	87	78
4.00	106	101	96	104	99	95	99	95	92	83
5.00	109	104	100	106	102	98	101	98	95	86
ROOM INDEX	UF(total)									Direct
According to DIN EN 13032-2 2004			Suspended					SHRNM = 1.25		

C Range: 0 - 360DEG
 C Interval: 30.0DEG
 Test Speed: HIGH
 Temperature:25.3DEG
 Operators:WFW
 Test Date:2022-12-15

γ Range: 0 - 180DEG
 γ Interval: 1.0DEG
 Test System:EVERFINE GO-2000B_V1 SYSTEM V2.0.269
 Humidity:65.0%
 Test Distance:10.800m [K=1.0000]
 Remarks:

ISOCANDELA DIAGRAM

Test:U:24.00V I:0.1677A P:4.025W PF:1.000 Lamp Flux:43.5636x1 lm		
NAME: SP01-24V-5050-60-RGBW-5000K-80-B	TYPE: 硅胶	WEIGHT:
DIM.: 15mm*7mm	SPEC.:	SERIAL No.:20221223
MFR.: OLYMPIA	SUR.:1*0.0015	PROTECTION ANGLE:

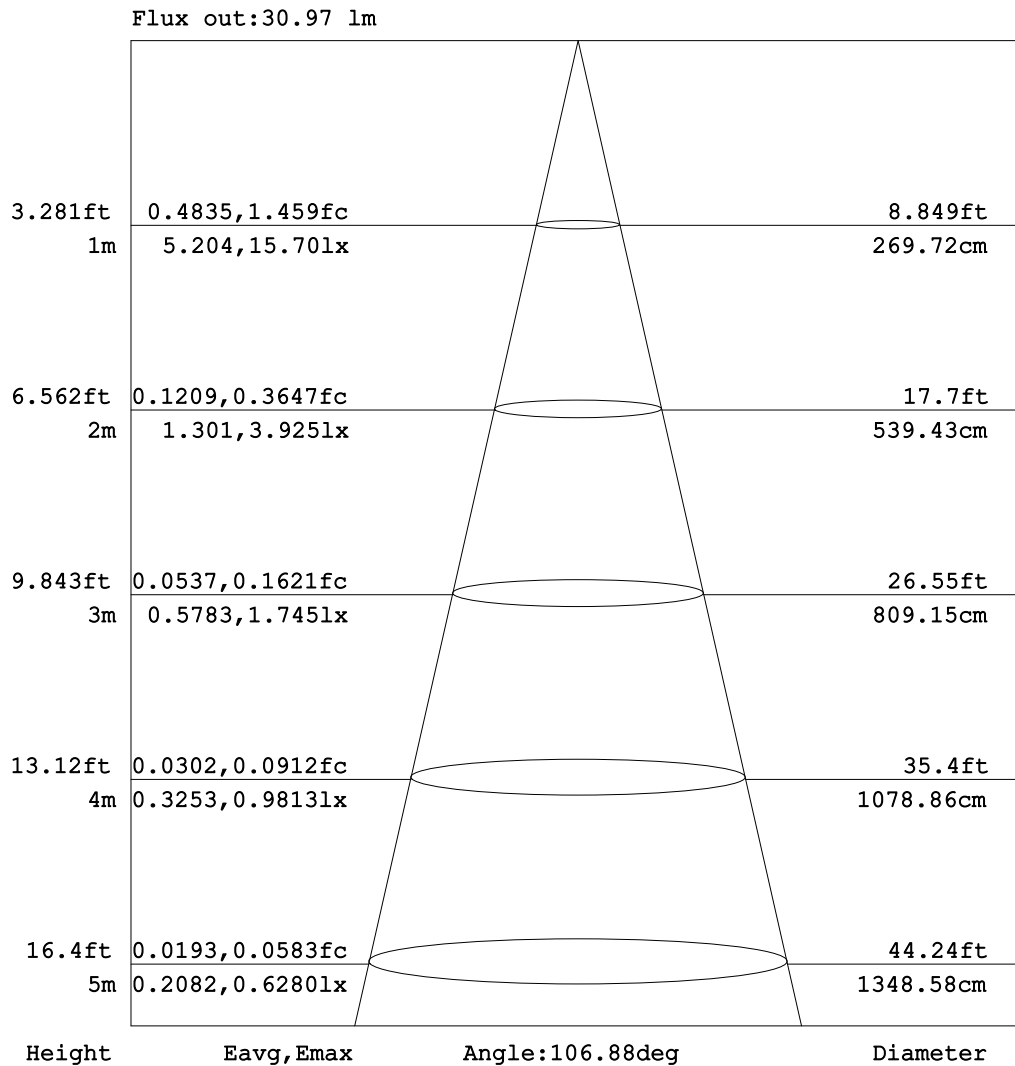


C Range: 0 - 360DEG
C Interval: 30.0DEG
Test Speed: HIGH
Temperature:25.3DEG
Operators:WFW
Test Date:2022-12-15

γ Range: 0 - 180DEG
 γ Interval: 1.0DEG
Test System:EVERFINE GO-2000B_V1 SYSTEM V2.0.269
Humidity:65.0%
Test Distance:10.800m [K=1.0000]
Remarks:

AAI Figure

Test:U:24.00V I:0.1677A P:4.025W PF:1.000 Lamp Flux:43.5636x1 lm		
NAME: SP01-24V-5050-60-RGBW-5000K-80-B	TYPE: 硅胶	WEIGHT:
DIM.: 15mm*7mm	SPEC.:	SERIAL No.:20221223
MFR.: OLYMPIA	SUR.:1*0.0015	PROTECTION ANGLE:



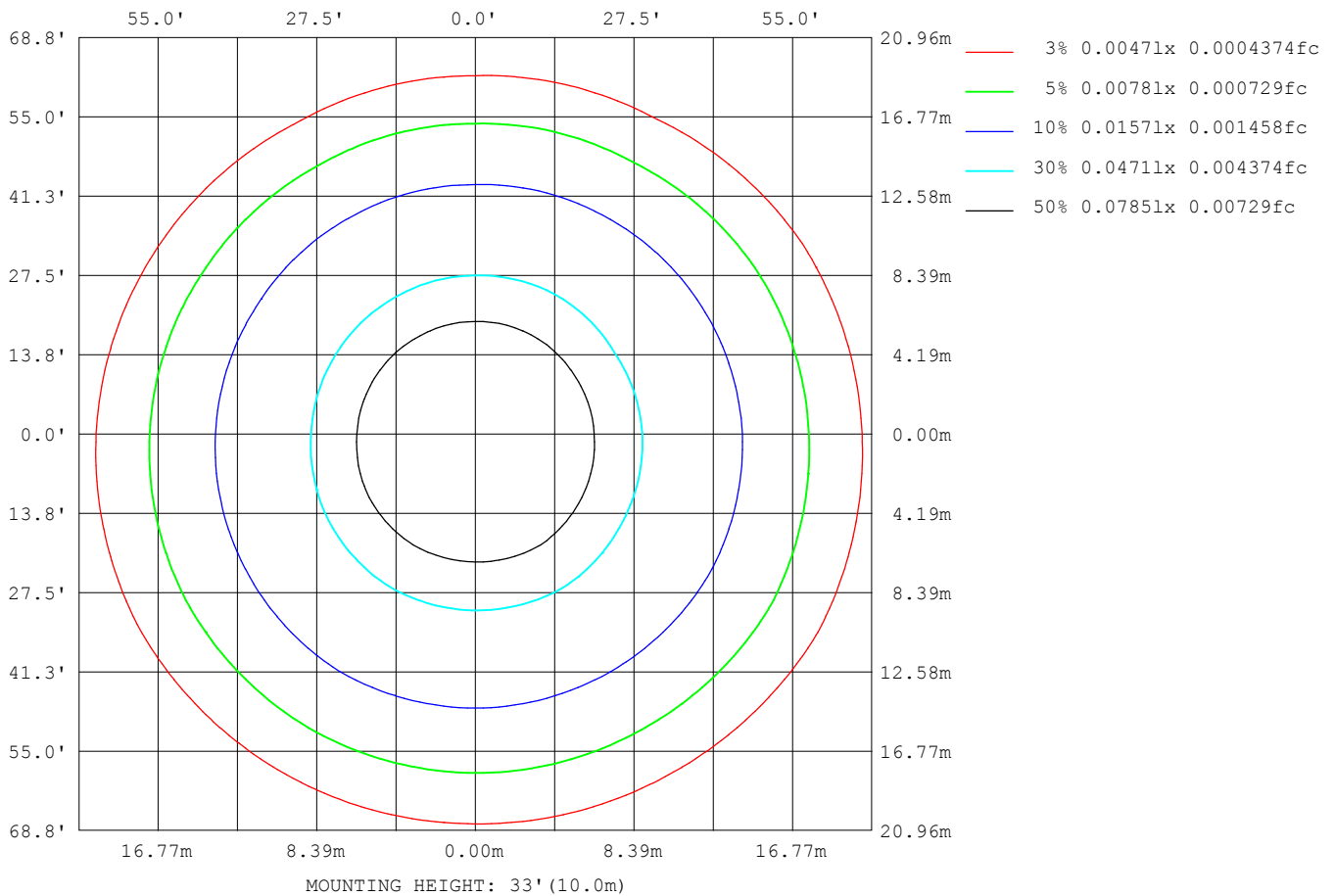
Note: The Curves indicate the illuminated area and the average illumination when the luminaire is at different distance.

C Range: 0 - 360DEG
C Interval: 30.0DEG
Test Speed: HIGH
Temperature: 25.3DEG
Operators: WFW
Test Date: 2022-12-15

γ Range: 0 - 180DEG
γ Interval: 1.0DEG
Test System: EVERFINE GO-2000B_V1 SYSTEM V2.0.269
Humidity: 65.0%
Test Distance: 10.800m [K=1.0000]
Remarks:

ISOLUX DIAGRAM

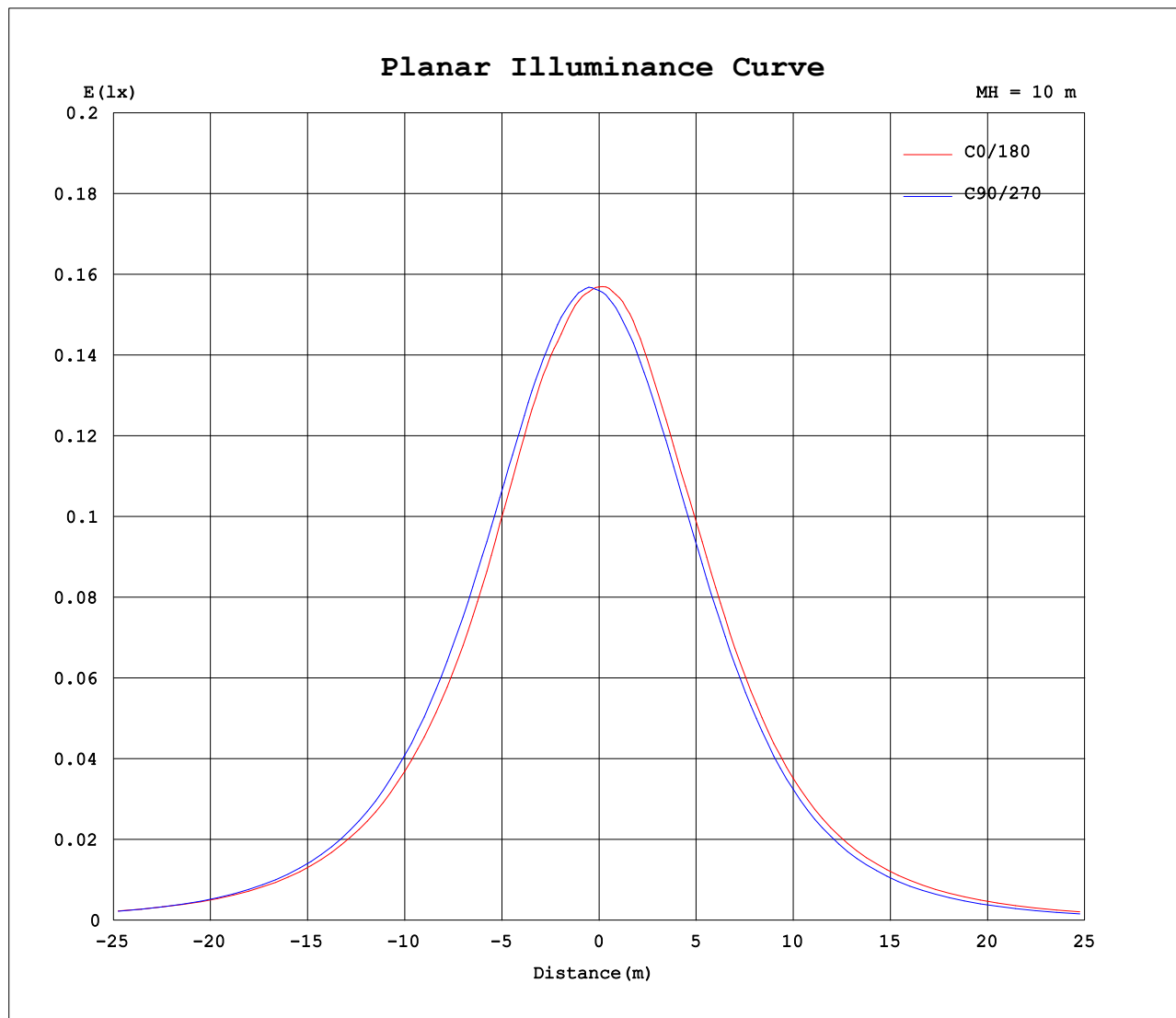
Test:U:24.00V I:0.1677A P:4.025W PF:1.000 Lamp Flux:43.5636x1 lm		
NAME: SP01-24V-5050-60-RGBW-5000K-80-B	TYPE: 硅胶	WEIGHT:
DIM.: 15mm*7mm	SPEC.:	SERIAL No.:20221223
MFR.: OLYMPIA	SUR.:1*0.0015	PROTECTION ANGLE:



C Range: 0 - 360DEG
C Interval: 30.0DEG
Test Speed: HIGH
Temperature:25.3DEG
Operators:WFW
Test Date:2022-12-15

γ Range: 0 - 180DEG
 γ Interval: 1.0DEG
Test System:EVERFINE GO-2000B_V1 SYSTEM V2.0.269
Humidity:65.0%
Test Distance:10.800m [K=1.0000]
Remarks:

Planar Illuminance Curve



C Range: 0 - 360DEG
C Interval: 30.0DEG
Test Speed: HIGH
Temperature: 25.3DEG
Operators: WFW
Test Date: 2022-12-15

γ Range: 0 - 180DEG
 γ Interval: 1.0DEG
Test System: EVERFINE GO-2000B_V1 SYSTEM V2.0.269
Humidity: 65.0%
Test Distance: 10.800m [K=1.0000]
Remarks:

LUMINOUS DISTRIBUTION INTENSITY DATA

Test:U:24.00V I:0.1677A P:4.025W PF:1.000 Lamp Flux:43.5636x1 lm		
NAME: SP01-24V-5050-60-RGBW-5000K-80-B	TYPE: 硅胶	WEIGHT:
DIM.: 15mm*7mm	SPEC.:	SERIAL No.:20221223
MFR.: OLYMPIA	SUR.:1*0.0015	PROTECTION ANGLE:

Table--1

UNIT: cd

C (DEG) γ (DEG)	0	30	60	90	120	150	180	210	240	270	300	330						
0	15.7	15.6	15.6	15.6	15.5	15.5	15.7	15.6	15.6	15.6	15.5	15.5						
5	15.6	15.6	15.7	15.8	15.7	15.7	15.7	15.6	15.4	15.3	15.2	15.4						
10	15.4	15.6	15.7	15.8	15.8	15.6	15.5	15.4	15.1	15.0	14.9	15.1						
15	15.2	15.4	15.7	15.7	15.8	15.3	15.1	14.9	14.7	14.5	14.5	14.7						
20	14.9	15.2	15.4	15.5	15.5	14.9	14.6	14.2	14.1	13.9	13.9	14.3						
25	14.2	14.8	15.0	15.0	15.0	14.4	14.0	13.5	13.4	13.3	13.3	13.7						
30	13.3	14.0	14.5	14.5	14.4	13.9	13.3	12.8	12.5	12.5	12.6	12.8						
35	12.4	13.0	13.8	13.7	13.5	13.0	12.3	11.8	11.5	11.5	11.8	11.8						
40	11.4	12.0	12.8	12.7	12.5	11.9	11.2	10.7	10.4	10.4	10.7	10.8						
45	10.5	11.0	11.6	11.6	11.4	10.7	9.96	9.50	9.22	9.20	9.50	9.70						
50	9.28	9.80	10.2	10.2	10.2	9.38	8.68	8.22	7.94	7.86	8.19	8.61						
55	8.04	8.53	8.63	8.69	8.65	8.01	7.44	6.89	6.58	6.56	6.81	7.41						
60	6.67	7.21	7.06	7.07	6.99	6.68	6.16	5.65	5.23	5.22	5.45	6.15						
65	5.27	5.73	5.50	5.37	5.38	5.34	4.91	4.46	3.95	3.91	4.15	4.87						
70	3.96	4.22	4.03	3.70	3.91	3.99	3.54	3.28	2.83	2.70	3.00	3.58						
75	2.68	2.81	2.68	2.24	2.57	2.66	2.33	2.20	1.87	1.68	1.98	2.39						
80	1.53	1.57	1.48	1.16	1.48	1.51	1.32	1.28	1.04	0.92	1.08	1.36						
85	0.60	0.56	0.54	0.42	0.63	0.60	0.50	0.53	0.39	0.36	0.38	0.52						
90	0.14	0.10	0.11	0.10	0.12	0.08	0.03	0.08	0.03	0.06	0.03	0.07						
95	0.10	0.10	0.10	0.10	0.08	0.08	0.02	0.03	0.05	0.05	0.03	0.03						
100	0.10	0.10	0.10	0.11	0.08	0.10	0.03	0.00	0.06	0.05	0.06	0.03						
105	0.10	0.11	0.10	0.14	0.08	0.10	0.05	0.01	0.08	0.06	0.07	0.03						
110	0.10	0.13	0.10	0.15	0.08	0.12	0.07	0.01	0.08	0.07	0.08	0.03						
115	0.10	0.14	0.10	0.16	0.08	0.12	0.09	0.07	0.10	0.07	0.10	0.03						
120	0.10	0.16	0.10	0.16	0.08	0.14	0.10	0.08	0.11	0.07	0.12	0.06						
125	0.10	0.16	0.10	0.18	0.10	0.15	0.10	0.08	0.12	0.07	0.13	0.06						
130	0.10	0.17	0.10	0.17	0.10	0.15	0.12	0.08	0.13	0.07	0.13	0.06						
135	0.11	0.18	0.12	0.18	0.10	0.17	0.13	0.08	0.15	0.07	0.13	0.06						
140	0.13	0.19	0.15	0.19	0.11	0.18	0.16	0.08	0.17	0.08	0.16	0.08						
145	0.17	0.19	0.15	0.19	0.15	0.19	0.16	0.10	0.19	0.12	0.18	0.08						
150	0.18	0.20	0.17	0.20	0.17	0.19	0.19	0.12	0.19	0.12	0.19	0.10						
155	0.19	0.20	0.18	0.20	0.18	0.19	0.19	0.17	0.19	0.16	0.19	0.11						
160	0.19	0.20	0.19	0.20	0.18	0.19	0.19	0.18	0.19	0.19	0.19	0.17						
165	0.19	0.20	0.19	0.19	0.18	0.19	0.19	0.18	0.19	0.19	0.18	0.18						
170	0.19	0.20	0.19	0.19	0.18	0.19	0.19	0.18	0.19	0.19	0.17	0.19						
175	0.19	0.20	0.19	0.19	0.18	0.19	0.19	0.18	0.19	0.19	0.17	0.19						
180	0.20	0.20	0.19	0.19	0.19	0.19	0.19	0.19	0.19	0.19	0.19	0.19						

C Range: 0 - 360DEG
C Interval: 30.0DEG
Test Speed: HIGH
Temperature:25.3DEG
Operators:WFW
Test Date:2022-12-15

γ Range: 0 - 180DEG
γ Interval: 1.0DEG
Test System:EVERFINE GO-2000B_V1 SYSTEM V2.0.269
Humidity:65.0%
Test Distance:10.800m [K=1.0000]
Remarks:

Photometric Data Table [cd]

G/C	0.0	30.0	60.0	90.0	120.0	150.0	180.0	210.0	240.0	270.0
0.0	15.69	15.65	15.56	15.60	15.50	15.54	15.69	15.65	15.56	15.60
3.0	15.63	15.65	15.67	15.75	15.65	15.67	15.72	15.65	15.46	15.45
6.0	15.60	15.65	15.69	15.80	15.78	15.67	15.68	15.56	15.36	15.27
9.0	15.47	15.60	15.71	15.79	15.80	15.67	15.60	15.41	15.13	15.04
12.0	15.31	15.51	15.71	15.77	15.80	15.56	15.39	15.17	14.92	14.78
15.0	15.24	15.42	15.69	15.68	15.76	15.33	15.10	14.86	14.67	14.50
18.0	15.04	15.33	15.56	15.58	15.65	15.11	14.78	14.49	14.33	14.16
21.0	14.74	15.12	15.33	15.37	15.43	14.81	14.45	14.11	13.94	13.82
24.0	14.34	14.85	15.07	15.13	15.17	14.50	14.11	13.68	13.55	13.41
27.0	13.90	14.48	14.82	14.81	14.79	14.16	13.75	13.23	13.02	12.98
30.0	13.32	13.99	14.49	14.45	14.35	13.85	13.27	12.79	12.52	12.47
33.0	12.77	13.46	14.13	14.02	13.88	13.41	12.71	12.27	11.92	11.93
36.0	12.20	12.85	13.62	13.51	13.36	12.85	12.05	11.64	11.33	11.32
39.0	11.64	12.24	13.01	12.91	12.78	12.17	11.41	10.95	10.65	10.65
42.0	11.07	11.59	12.38	12.28	12.11	11.47	10.68	10.21	9.936	9.913
45.0	10.45	10.95	11.63	11.58	11.43	10.70	9.957	9.497	9.222	9.199
48.0	9.761	10.30	10.80	10.79	10.70	9.950	9.202	8.749	8.488	8.375
51.0	9.055	9.576	9.929	9.908	9.866	9.132	8.446	7.912	7.677	7.586
54.0	8.314	8.808	8.952	8.908	8.938	8.274	7.685	7.156	6.854	6.796
57.0	7.497	8.011	7.996	8.073	7.982	7.464	6.930	6.353	6.050	5.986
60.0	6.665	7.214	7.061	7.068	6.992	6.681	6.161	5.653	5.226	5.224
63.0	5.807	6.300	6.119	6.050	6.009	5.864	5.420	4.906	4.436	4.421
66.0	4.997	5.427	5.205	5.025	5.059	5.047	4.644	4.206	3.703	3.645
69.0	4.221	4.499	4.325	4.021	4.179	4.250	3.813	3.520	3.052	2.931
72.0	3.445	3.620	3.487	3.086	3.321	3.460	3.044	2.856	2.415	2.267
75.0	2.676	2.810	2.676	2.242	2.572	2.665	2.332	2.204	1.868	1.685
78.0	1.976	2.041	1.928	1.570	1.893	1.944	1.715	1.622	1.363	1.193
81.0	1.325	1.328	1.256	0.9683	1.290	1.300	1.148	1.109	0.8988	0.7974
84.0	0.7640	0.7256	0.6947	0.5391	0.7707	0.7603	0.6492	0.6593	0.5041	0.4511
87.0	0.3408	0.2831	0.2853	0.2072	0.3684	0.3246	0.2690	0.2919	0.1930	0.2084
90.0	0.1390	0.0970	0.1110	0.0970	0.1183	0.0831	0.0346	0.0835	0.0346	0.0556
93.0	0.1039	0.0970	0.0970	0.0970	0.0831	0.0831	0.0208	0.0347	0.0484	0.0485
96.0	0.0970	0.0970	0.0970	0.0970	0.0831	0.0832	0.0208	0.0277	0.0485	0.0485
99.0	0.0970	0.0970	0.0970	0.1108	0.0831	0.1039	0.0346	0	0.0555	0.0485
102.0	0.1039	0.0970	0.0970	0.1316	0.0831	0.1039	0.0416	0	0.0624	0.0623
105.0	0.0970	0.1109	0.0970	0.1386	0.0831	0.1039	0.0486	0.0139	0.0762	0.0624
108.0	0.0970	0.1247	0.0970	0.1454	0.0831	0.1177	0.0555	0.0139	0.0831	0.0693
111.0	0.0970	0.1316	0.0970	0.1456	0.0831	0.1177	0.0761	0.0139	0.0833	0.0693
114.0	0.0970	0.1385	0.0970	0.1593	0.0831	0.1247	0.0763	0.0759	0.1038	0.0693
117.0	0.0970	0.1386	0.0970	0.1593	0.0831	0.1385	0.0832	0.0831	0.1109	0.0693
120.0	0.0970	0.1592	0.0970	0.1593	0.0831	0.1385	0.0970	0.0831	0.1108	0.0693
123.0	0.0970	0.1524	0.0970	0.1593	0.1037	0.1524	0.0970	0.0831	0.1110	0.0693
126.0	0.0970	0.1594	0.0970	0.1731	0.0970	0.1524	0.1039	0.0831	0.1177	0.0693
129.0	0.0970	0.1663	0.0970	0.1731	0.0970	0.1524	0.1109	0.0831	0.1179	0.0693
132.0	0.0970	0.1731	0.0970	0.1801	0.0970	0.1662	0.1316	0.0831	0.1523	0.0693
135.0	0.1107	0.1801	0.1177	0.1801	0.1039	0.1662	0.1316	0.0831	0.1525	0.0693
138.0	0.1107	0.1801	0.1246	0.1870	0.1109	0.1801	0.1318	0.0831	0.1594	0.0832
141.0	0.1453	0.1871	0.1523	0.1870	0.1177	0.1801	0.1593	0.0900	0.1662	0.0900
144.0	0.1731	0.1939	0.1524	0.1939	0.1316	0.1801	0.1593	0.1038	0.1733	0.1038
147.0	0.1731	0.2008	0.1730	0.2008	0.1661	0.1870	0.1801	0.1039	0.1871	0.1247
150.0	0.1801	0.2008	0.1731	0.2008	0.1731	0.1870	0.1938	0.1177	0.1939	0.1247
153.0	0.1801	0.2008	0.1731	0.2008	0.1801	0.1870	0.1870	0.1523	0.1939	0.1454
156.0	0.1870	0.2008	0.1938	0.2008	0.1801	0.1870	0.1870	0.1662	0.1939	0.1662
159.0	0.1870	0.2008	0.1870	0.2008	0.1801	0.1870	0.1870	0.1801	0.1939	0.1801
162.0	0.1870	0.2008	0.1870	0.2008	0.1801	0.1870	0.1870	0.1801	0.1939	0.1870
165.0	0.1870	0.2008	0.1870	0.1939	0.1801	0.1870	0.1870	0.1801	0.1939	0.1870
168.0	0.1870	0.2008	0.1870	0.1939	0.1801	0.1870	0.1870	0.1801	0.1939	0.1870
171.0	0.1870	0.2008	0.1870	0.1939	0.1801	0.1870	0.1870	0.1801	0.1939	0.1870
174.0	0.1870	0.2008	0.1870	0.1939	0.1801	0.1870	0.1870	0.1801	0.1939	0.1870
177.0	0.1870	0.2008	0.1870	0.1939	0.1801	0.1870	0.1870	0.1801	0.1939	0.1870
180.0	0.2008	0.2008	0.1939	0.1939	0.1870	0.1870	0.1870	0.1870	0.1939	0.1870
G/C	300.0	330.0								
0.0	15.50	15.54								
3.0	15.35	15.41								
6.0	15.15	15.31								
9.0	14.97	15.15								
12.0	14.73	14.92								
15.0	14.47	14.69								
18.0	14.15	14.50								
21.0	13.80	14.16								
24.0	13.39	13.80								
27.0	13.01	13.36								
30.0	12.60	12.84								

C Range: 0 - 360DEG
 C Interval: 30.0DEG
 Test Speed: HIGH
 Temperature: 25.3DEG
 Operators: WFW
 Test Date: 2022-12-15

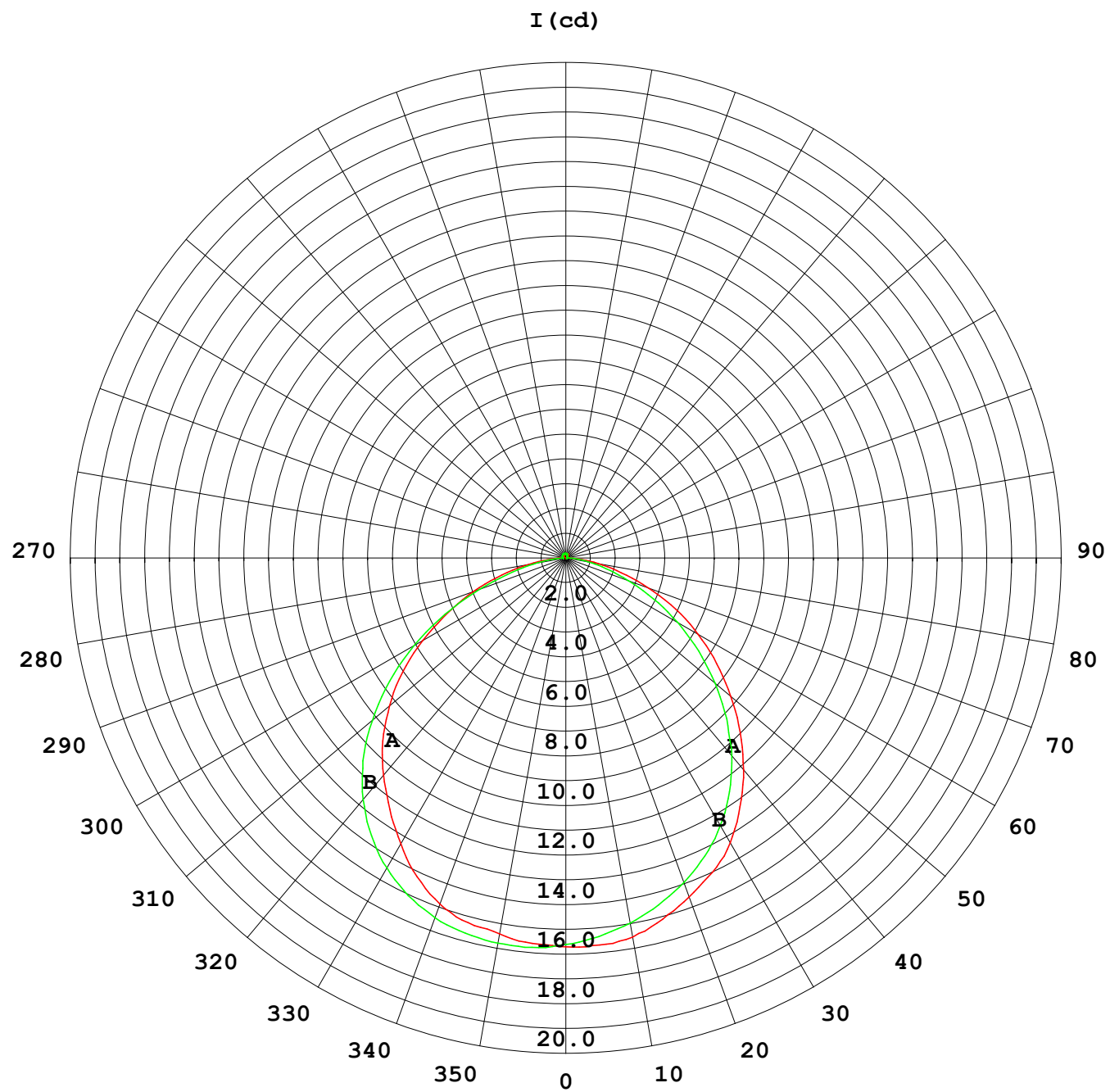
γ Range: 0 - 180DEG
 γ Interval: 1.0DEG
 Test System: EVERFINE GO-2000B_V1 SYSTEM V2.0.269
 Humidity: 65.0%
 Test Distance: 10.800m [K=1.0000]
 Remarks:

Photometric Data Table [cd]

33.0	12.15	12.24
36.0	11.58	11.61
39.0	10.94	11.00
42.0	10.25	10.35
45.0	9.500	9.705
48.0	8.765	9.054
51.0	7.927	8.376
54.0	7.082	7.662
57.0	6.258	6.907
60.0	5.454	6.145
63.0	4.651	5.391
66.0	3.918	4.615
69.0	3.225	3.839
72.0	2.574	3.098
75.0	1.979	2.391
78.0	1.418	1.754
81.0	0.9261	1.165
84.0	0.4972	0.6595
87.0	0.1584	0.2711
90.0	0.0346	0.0697
93.0	0.0277	0.0278
96.0	0.0277	0.0277
99.0	0.0348	0.0277
102.0	0.0623	0.0277
105.0	0.0693	0.0277
108.0	0.0762	0.0277
111.0	0.0831	0.0346
114.0	0.0901	0.0346
117.0	0.0970	0.0622
120.0	0.1177	0.0554
123.0	0.1108	0.0554
126.0	0.1247	0.0623
129.0	0.1316	0.0623
132.0	0.1316	0.0623
135.0	0.1317	0.0623
138.0	0.1454	0.0623
141.0	0.1595	0.0830
144.0	0.1732	0.0831
147.0	0.1801	0.0831
150.0	0.1870	0.1038
153.0	0.1870	0.1039
156.0	0.1870	0.1108
159.0	0.1870	0.1660
162.0	0.1801	0.1800
165.0	0.1800	0.1801
168.0	0.1662	0.1870
171.0	0.1662	0.1870
174.0	0.1662	0.1870
177.0	0.1939	0.1870
180.0	0.1939	0.1939

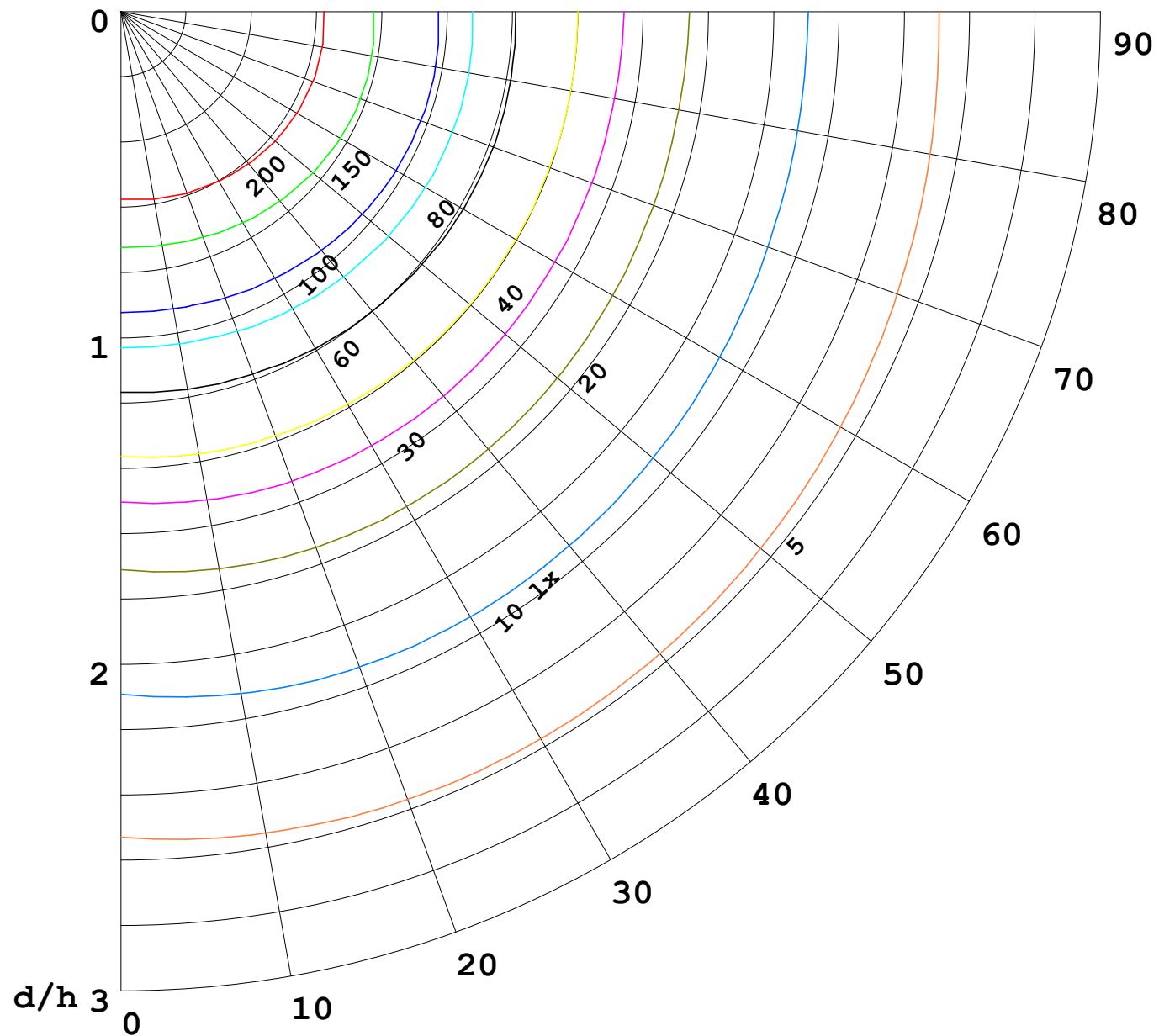
C Range: 0 - 360DEG
C Interval: 30.0DEG
Test Speed: HIGH
Temperature: 25.3DEG
Operators: WFW
Test Date: 2022-12-15

γ Range: 0 - 180DEG
γ Interval: 1.0DEG
Test System: EVERFINE GO-2000B_V1 SYSTEM V2.0.269
Humidity: 65.0%
Test Distance: 10.800m [K=1.0000]
Remarks:



1000 lm

$\kappa = 1$



F = 5000 lm
 K = 0.7
 Hcc = 0.0 m
 Hfc = 0.0 m
 Eave = 100 lx

	Pcc	Pw	Pfc
—	70	50	30
—	50	30	20

